



Apartment

FLAT 7, 36 LATHOM ROAD, SOUTHPORT, PR9 0JP

PCM

£650 PCM

FEATURES



WainwrightandEdwards

Estate Agents - Letting Agents - Property Management

1 Bedroom Apartment located in Southport

Top floor flat large lounge, kitchen, bathroom and large bedroom. Close to town centre and sea front.
Would suit young professional or couple.

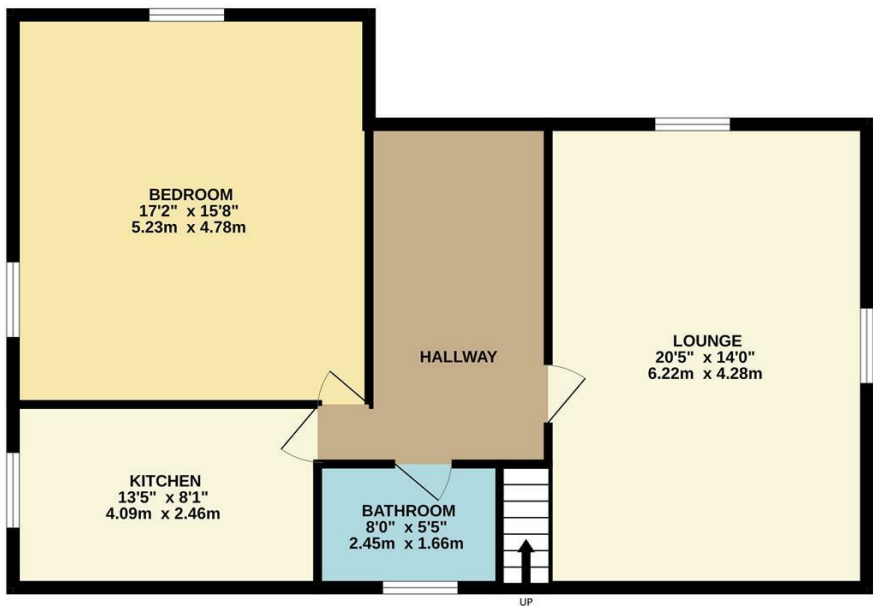
Call us on

01772-814863

lettings@wainwrightandedwards.co.uk
<http://www.we-estateagents.com/>

Council Tax Band

GROUND FLOOR
843 sq.ft. (78.3 sq.m.) approx.



TOTAL FLOOR AREA: 843 sq.ft. (78.3 sq.m.) approx.
Whilst every attempt has been made to ensure the accuracy of the floorplan contained here, measurements of doors, windows, rooms and any other items are approximate and no responsibility is taken for any error, omission or mis-statement. This plan is for illustrative purposes only and should be used as such by any prospective purchaser. The services, systems and appliances shown have not been tested and no guarantee as to their operability or efficiency can be given.
Made with Metropix ©2023



Energy Efficiency Rating		
	Current	Potential
Very energy efficient - lower running costs		
(92 plus) A		
(81-91) B		
(69-80) C		
(55-68) D		
(39-54) E		
(21-38) F		
(1-20) G		
Not energy efficient - higher running costs		
England & Wales		EU Directive 2002/91/EC

Agents Note: Whilst every care has been taken to prepare these particulars, they are for guidance purposes only. All measurements are approximate and are for general guidance purposes only and whilst every care has been taken to ensure their accuracy, they should not be relied upon and potential buyers are advised to recheck the measurements.

WainwrightandEdwards

Estate Agents - Letting Agents - Property Management